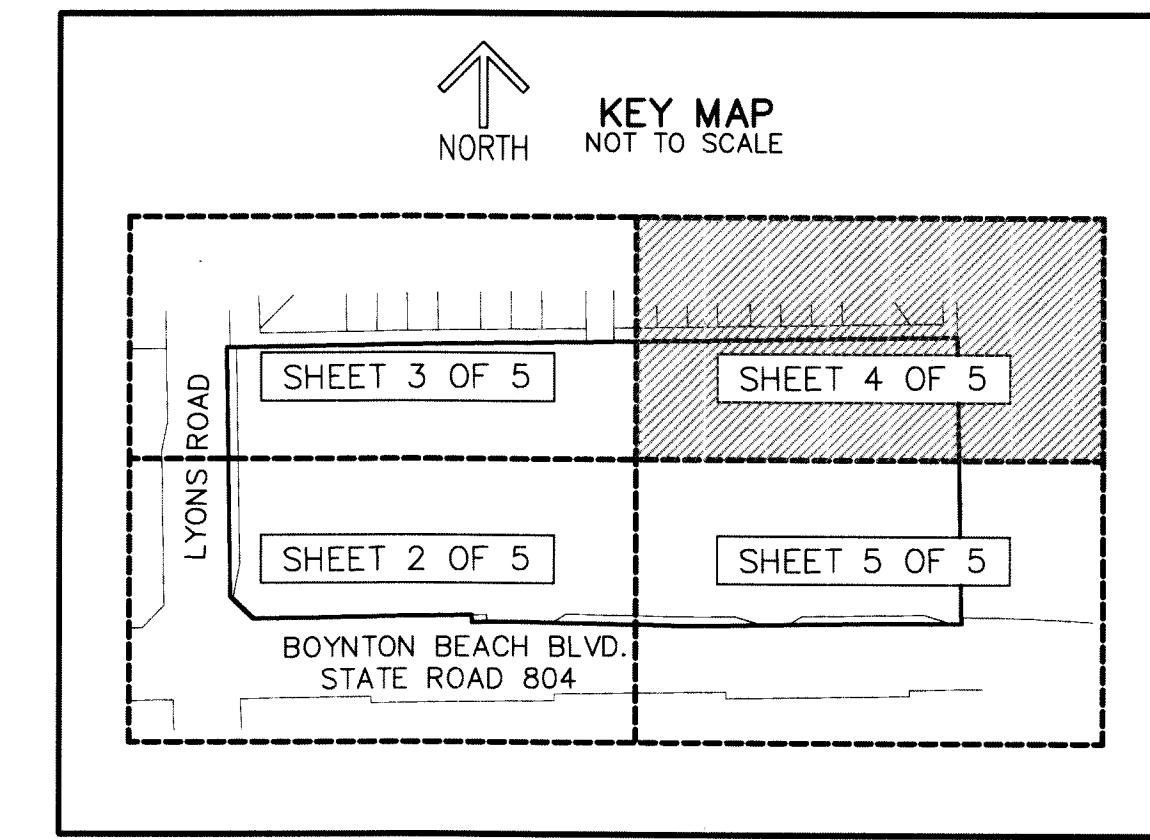


THIS INSTRUMENT PREPARED BY
 DAVID P. LINDLEY
 OF
CAULFIELD and WHEELER, INC.
 SURVEYORS - ENGINEERS - PLANNERS
 7900 GLADES ROAD, SUITE 100
 BOCA RATON, FLORIDA 33434 - (561)392-1991
 CERTIFICATE OF AUTHORIZATION NO. LB3591

COBBLESTONE PLAZA

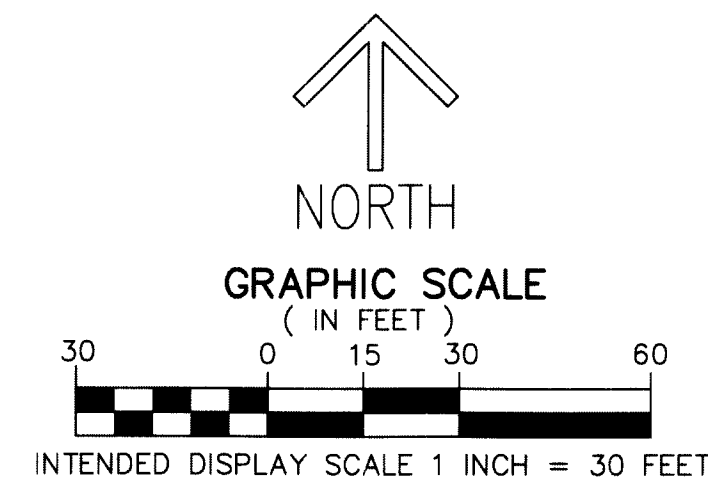
BEING A REPLAT OF TRACT B, WEST BOYNTON FARMS,
 AS RECORDED IN PLAT BOOK 104, PAGES 9 THROUGH 11
 OF THE PUBLIC RECORDS OF PALM BEACH COUNTY, FLORIDA,
 LYING IN SECTION 20, TOWNSHIP 45 SOUTH, RANGE 42 EAST,
 PALM BEACH COUNTY, FLORIDA



47

SHEET 4 OF 5

NOTES
COORDINATES, BEARINGS AND DISTANCES
 COORDINATES SHOWN ARE GRID
 DATUM = NAD 83 (90 ADJUSTMENT)
 ZONE = FLORIDA EAST
 LINEAR UNIT = US SURVEY FEET
 COORDINATE SYSTEM 1983 STATE PLANE
 TRANSVERSE MERCATOR PROJECTION
 ALL DISTANCES ARE GROUND
 SCALE FACTOR = 1.00002236
 GROUND DISTANCE X SCALE FACTOR = GRID DISTANCE
 BEARINGS AS SHOWN HEREON ARE GRID DATUM,
 NAD 83 (90 ADJUSTMENT), FLORIDA EAST ZONE.



LEGEND/ABBREVIATIONS

- Δ - DELTA (CENTRAL ANGLE)
- E - EASTING
- FPL - FLORIDA POWER AND LIGHT
- FDOT - FLORIDA DEPARTMENT OF TRANSPORTATION
- L - ARC LENGTH
- LB - LICENSED BUSINESS
- LAE - LIMITED ACCESS EASEMENT
- L.W.D.D. - LAKE WORTH DRAINAGE DISTRICT
- N - NORTHING
- O.R.B. - OFFICIAL RECORD BOOK
- R - RADIUS
- R/W - RIGHT-OF-WAY
- UE - UTILITY EASEMENT
- PRM - DENOTES PERMANENT REFERENCE MONUMENT
 4" x 4" x 24" CONCRETE MONUMENT WITH
 ALUMINUM DISK STAMPED "C&W PRM LB3591"
- △ - PALM BEACH COUNTY CONTROL POINT

